



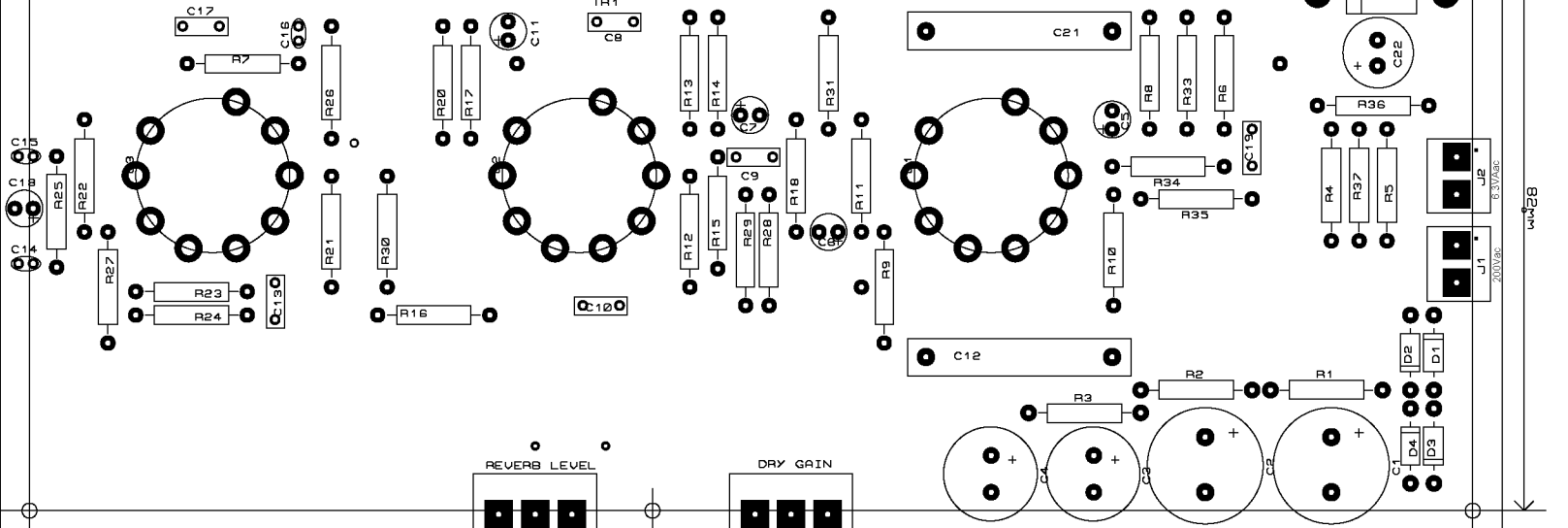
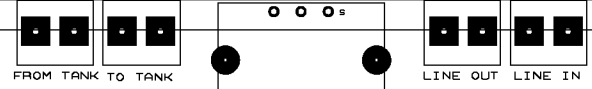
205mm

197mm

70mm

To reduce hum and hiss, keep the reverb tank away from the circuit board  
Install it outside the enclosure or isolate it with shielding plates

FISHERMAN K10 TUBE SPRING REVERB 1.2.0 / 2021



REVERB LEVEL

DRY GAIN

85mm

35mm

82mm

90mm

6-3V/50C  
200V/50C